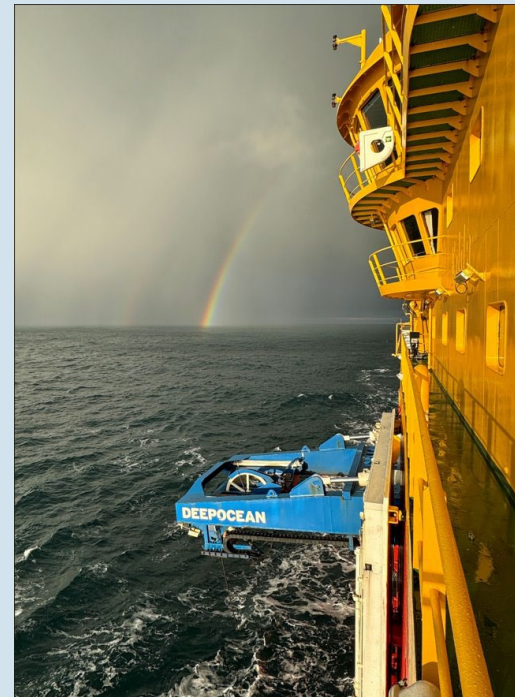


# A (non-) commercial market driving infrastructure investments

Rune Thorsen  
CCS Project Manager



# CO<sub>2</sub> Transport & Storage in Equinor

Ambition:

## 30 - 50 Mtpa

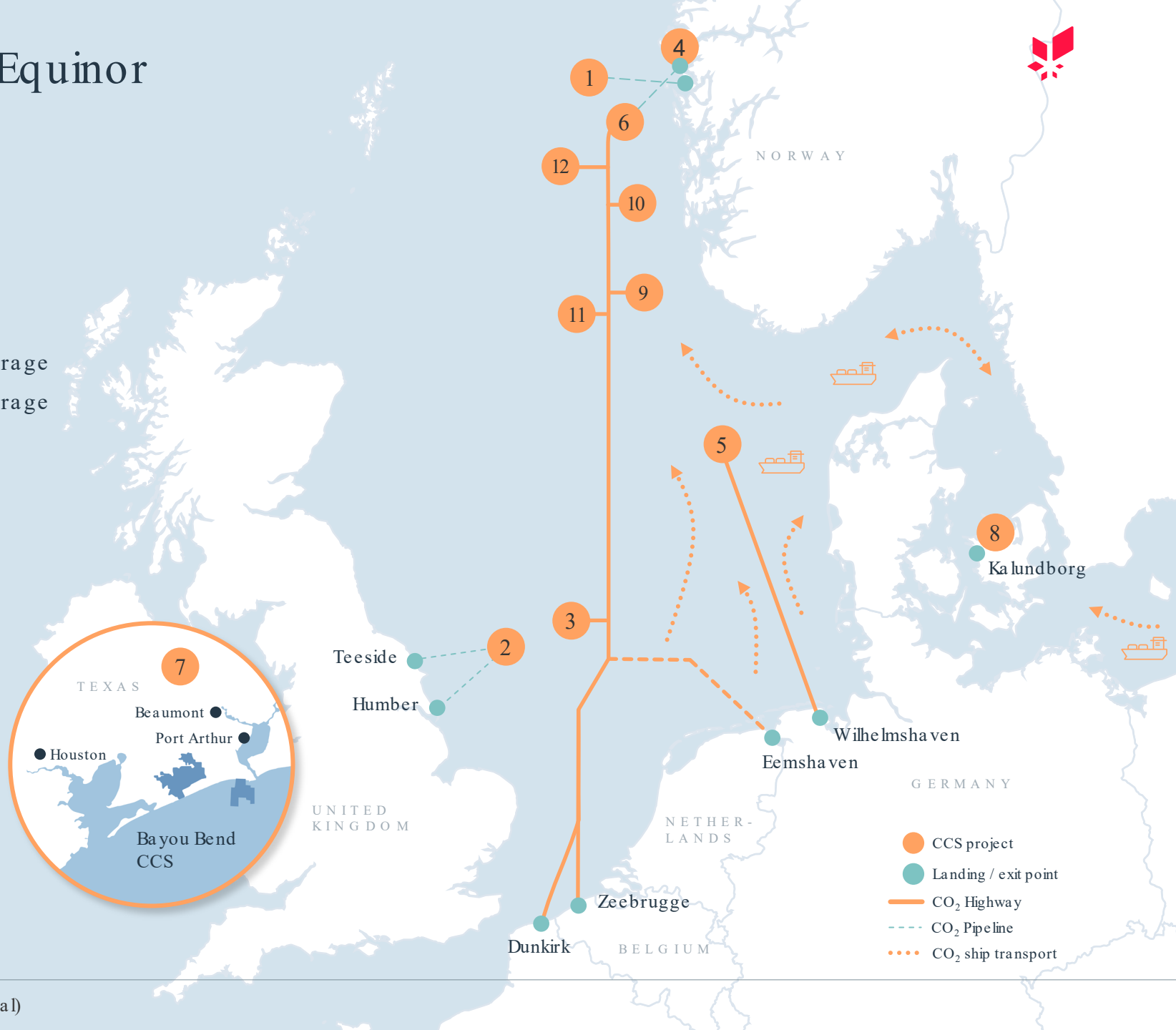
CO<sub>2</sub> transport and storage capacity by 2035

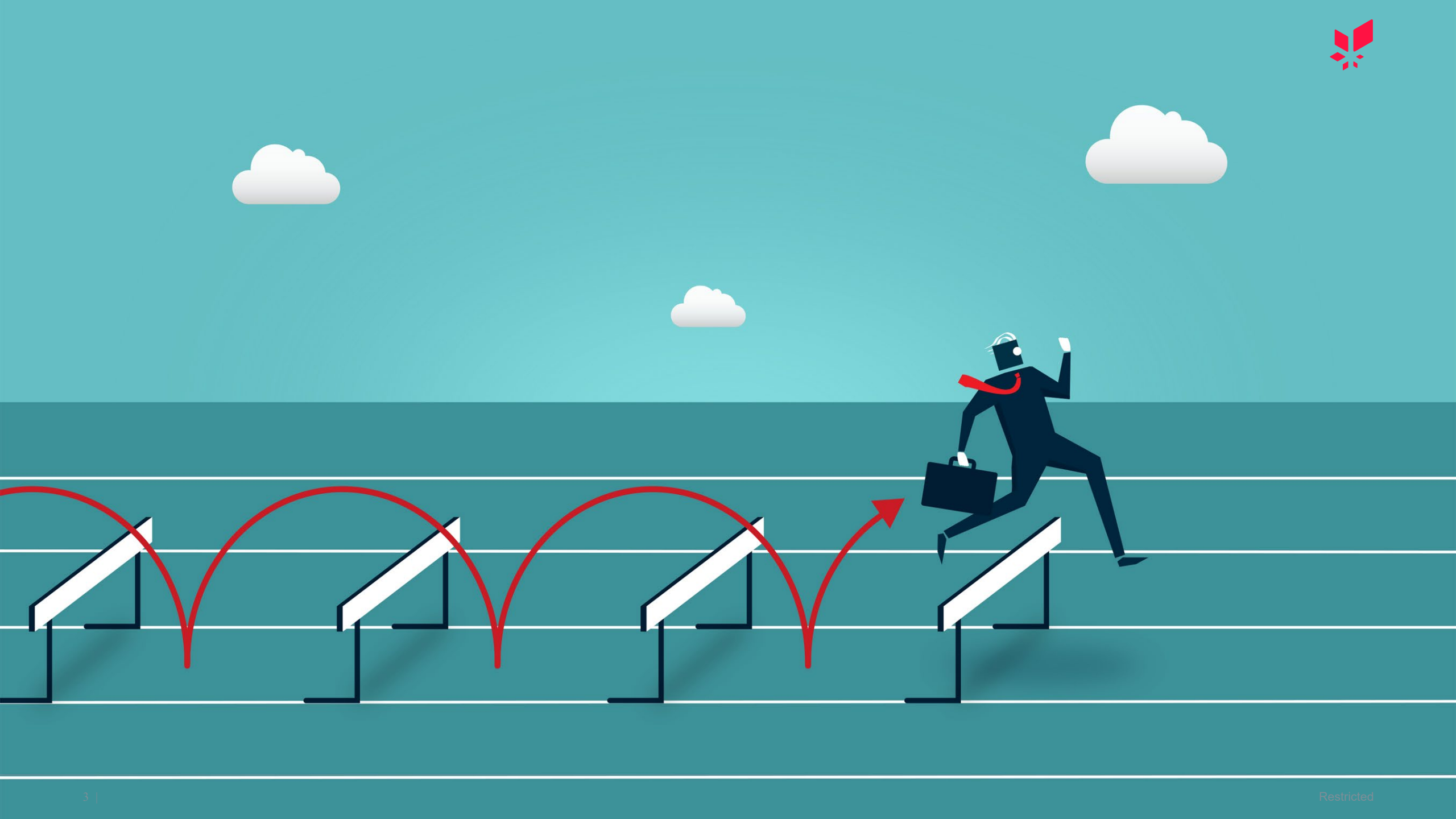
## Projects under development

- |  |                     |
|--|---------------------|
| 1. Northern Lights (NO)                    | Transport & Storage |
| 2. NEP*(UK)                                | Transport & Storage |
| 3. CO <sub>2</sub> Highway Europe (NWE)    | Transport           |
| 4. Norway Hub (NO)                         | Transport           |
| 5. GASSCO CO <sub>2</sub> T                | Transport           |
| 6. Smeaheia (NO)                           | Storage             |
| 7. Bayou Bend (US)                         | Storage             |
| 8. CO <sub>2</sub> Storage Kalundborg (DK) | Storage             |
| 9. Albondigas (NO)                         | Storage             |
| 10. Kinno (NO)                             | Storage             |
| 11. Kaupang (NO)                           | Storage             |
| 12. Forsete (NO)                           | Storage             |

- Building the infrastructure of tomorrow
- Collaboration across the value chain
- 4-8% real base project returns

\*Northern Endurance Partnership (including exploration licenses, 4 in total)







## A (non-) commercial market driving infrastructure investments

Rune Thorsen, Equinor Low Carbon Solutions

© Equinor ASA

This presentation, including the contents and arrangement of the contents of each individual page or the collection of the pages, is owned by Equinor. Copyright to all material including, but not limited to, written material, photographs, drawings, images, tables and data remains the property of Equinor. All rights reserved. Any other use, reproduction, translation, adaptation, arrangement, alteration, distribution or storage of this presentation, in whole or in part, without the prior written permission of Equinor is prohibited. The information contained in this presentation may not be accurate, up to date or applicable to the circumstances of any particular case, despite our efforts. Equinor cannot accept any liability for any inaccuracies or omissions.